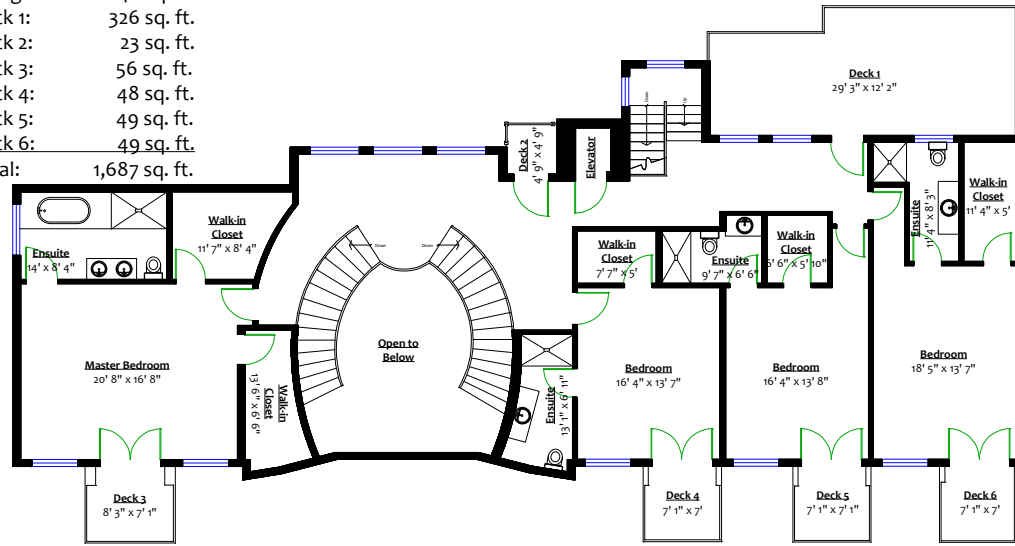


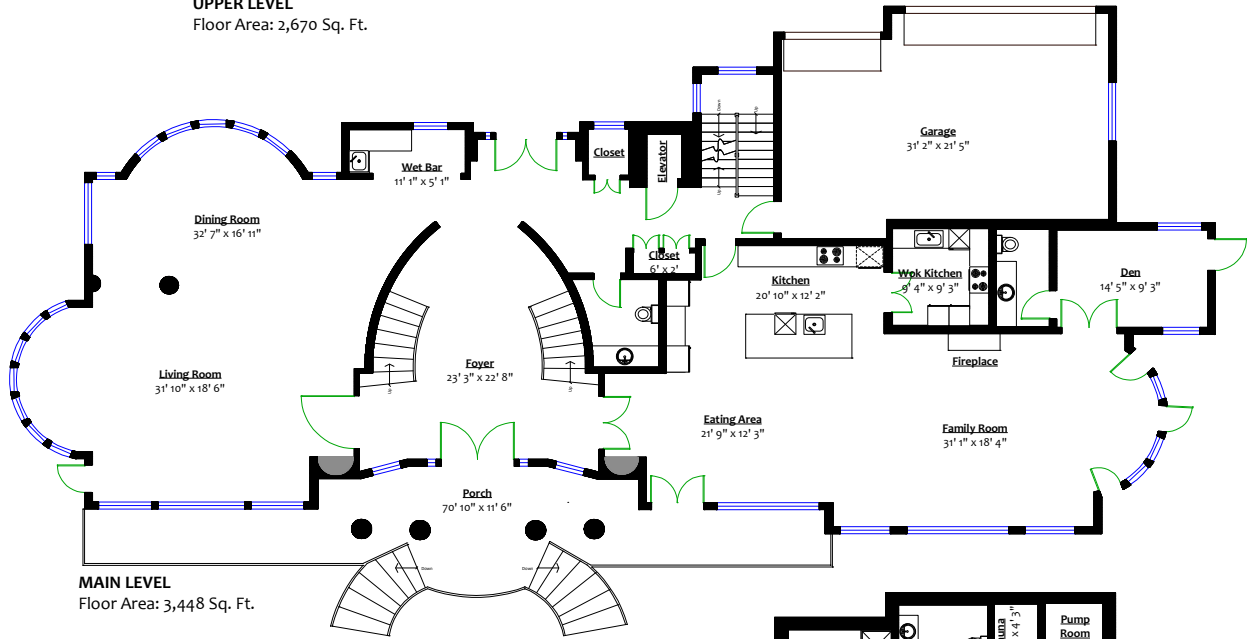
# 1175 Eyremount Drive, West Vancouver, B.C.

## Totals\*\*

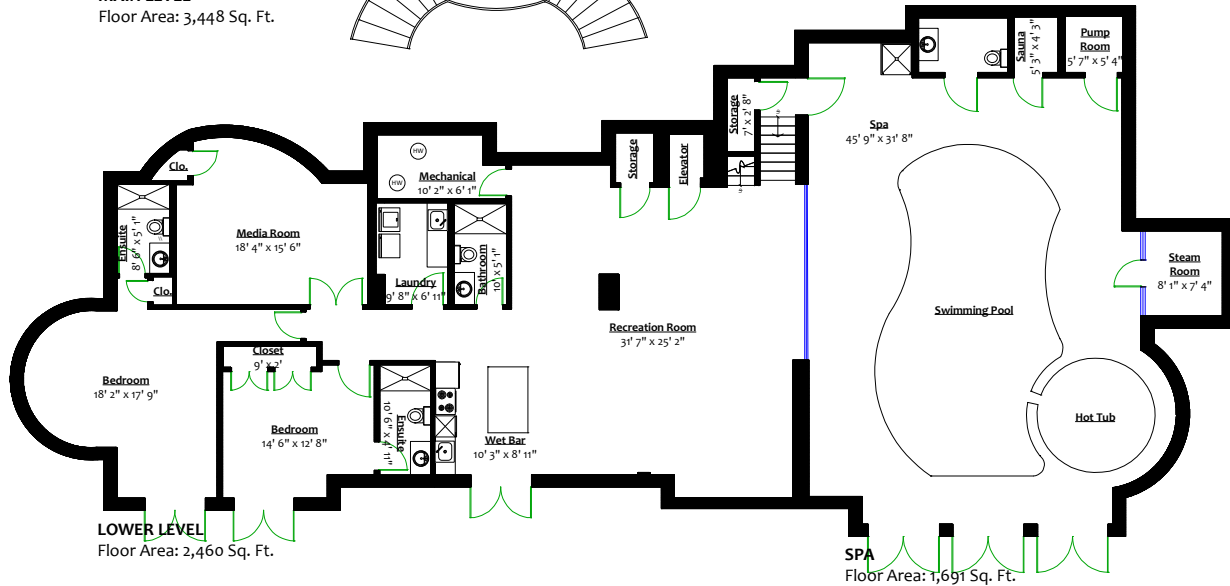
Main Level:	3,448 sq. ft.	Porch:	496 sq. ft.
Upper Level:	2,670 sq. ft.	Garage:	640 sq. ft.
Lower Level:	2,460 sq. ft.	Deck 1:	326 sq. ft.
Total:	8,578 sq. ft.	Deck 2:	23 sq. ft.
Spa:	1,691 sq. ft.	Deck 3:	56 sq. ft.
Grand Total:	10,269 sq. ft.	Deck 4:	48 sq. ft.
		Deck 5:	49 sq. ft.
		Deck 6:	49 sq. ft.
		Total:	1,687 sq. ft.



**UPPER LEVEL**  
Floor Area: 2,670 Sq. Ft.



**MAIN LEVEL**  
Floor Area: 3,448 Sq. Ft.



**LOWER LEVEL**  
Floor Area: 2,460 Sq. Ft.

**SPA**  
Floor Area: 1,691 Sq. Ft.

