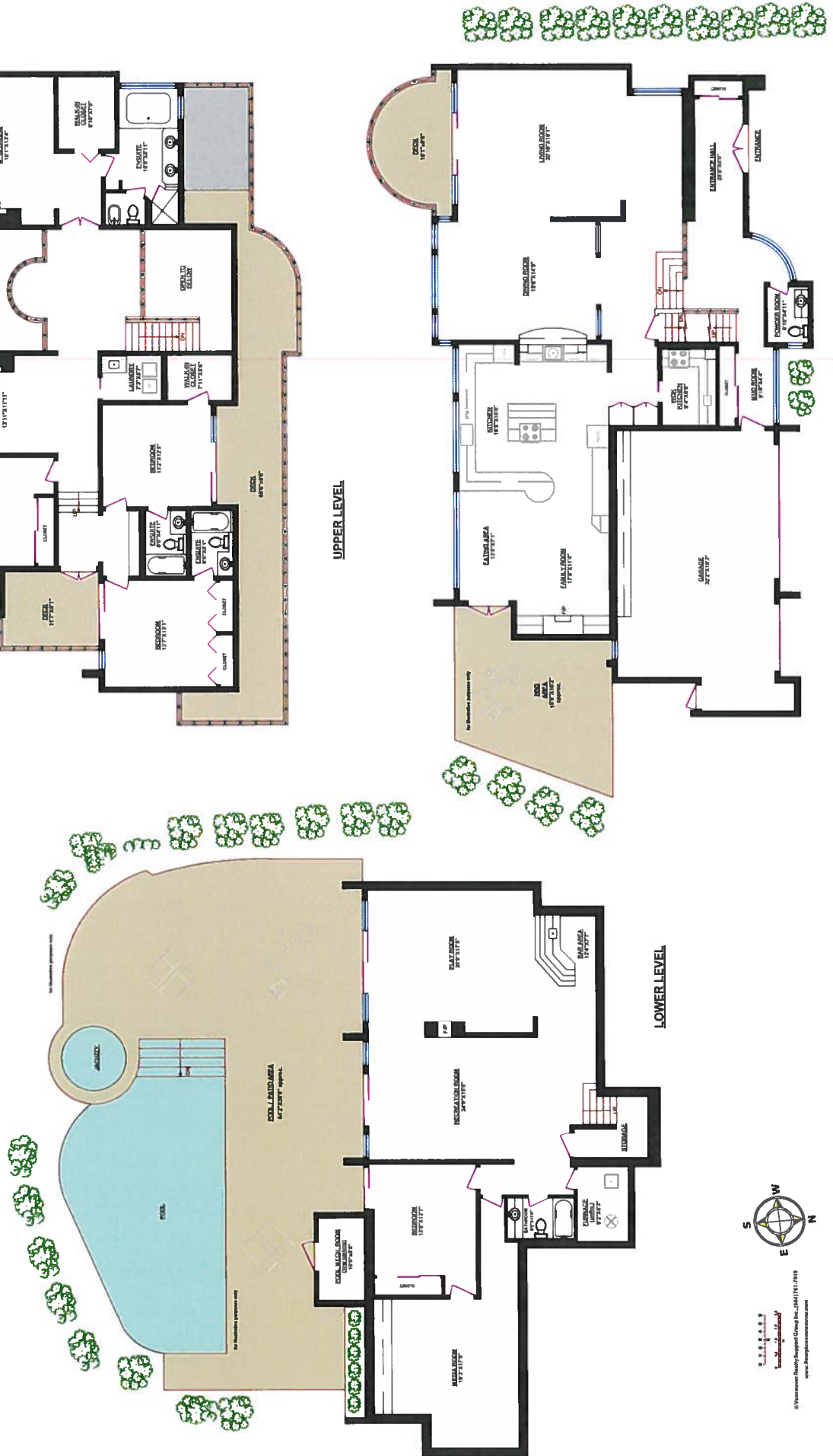


# 1562 PINECREST DRIVE, WEST VANCOUVER

TOTALS	
Main Floor (finished):	2,254 sq. ft.
Upper Level (finished):	2,077 sq. ft.
Lower Level (finished):	1,829 sq. ft.
<b>TOTAL FINISHED:</b>	<b>6,160 sq. ft.</b>
Lower Level (unfinished):	70 sq. ft.
TOTAL UNFINISHED:	70 sq. ft.
<b>GRAND TOTAL:</b>	<b>6,230 sq. ft.</b>

## OTHER AREAS:

Garage:	676 sq. ft.
Pool Mech. Room:	71 sq. ft.
Deck (Main):	131 sq. ft.
Deck (Up/Per):	437 sq. ft.
Deck (Up/Per):	437 sq. ft.
Deck (Up/Per):	107 sq. ft.



Scale: 1/8" = 1'-0"

© Vancouver Realty Support Group Inc. (VRS) 2018  
www.vrs.ca