

**1666 Marlowe Place,  
West Vancouver, B.C.**

**Totals\*\***

Main Level: 3,001 sq. ft. Garage: 642 sq. ft.

Lower Level: 2,466 sq. ft.

Total: 5,467 sq. ft.

Mechanical: 688 sq. ft.

Grand Total: 6,155 sq. ft.



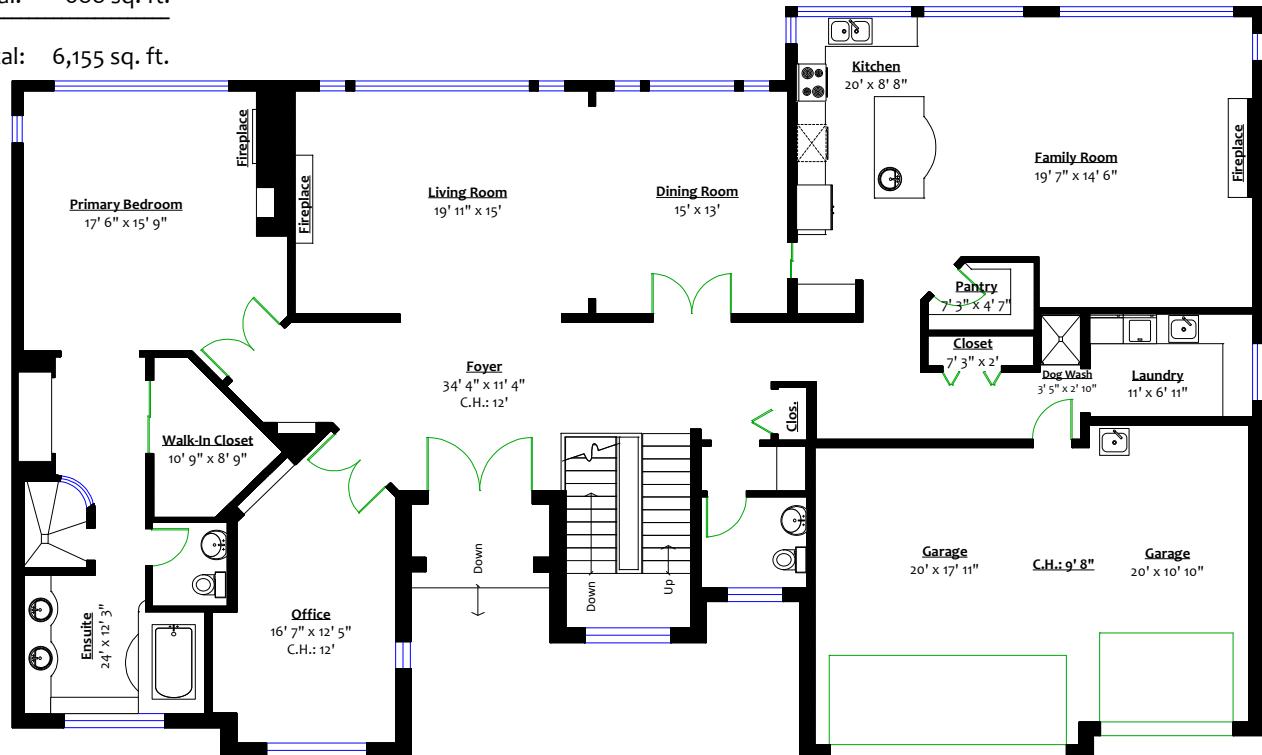
**JILA REZAEI**

PERSONAL REAL ESTATE CORPORATION

WWW.JILAREZAI.COM

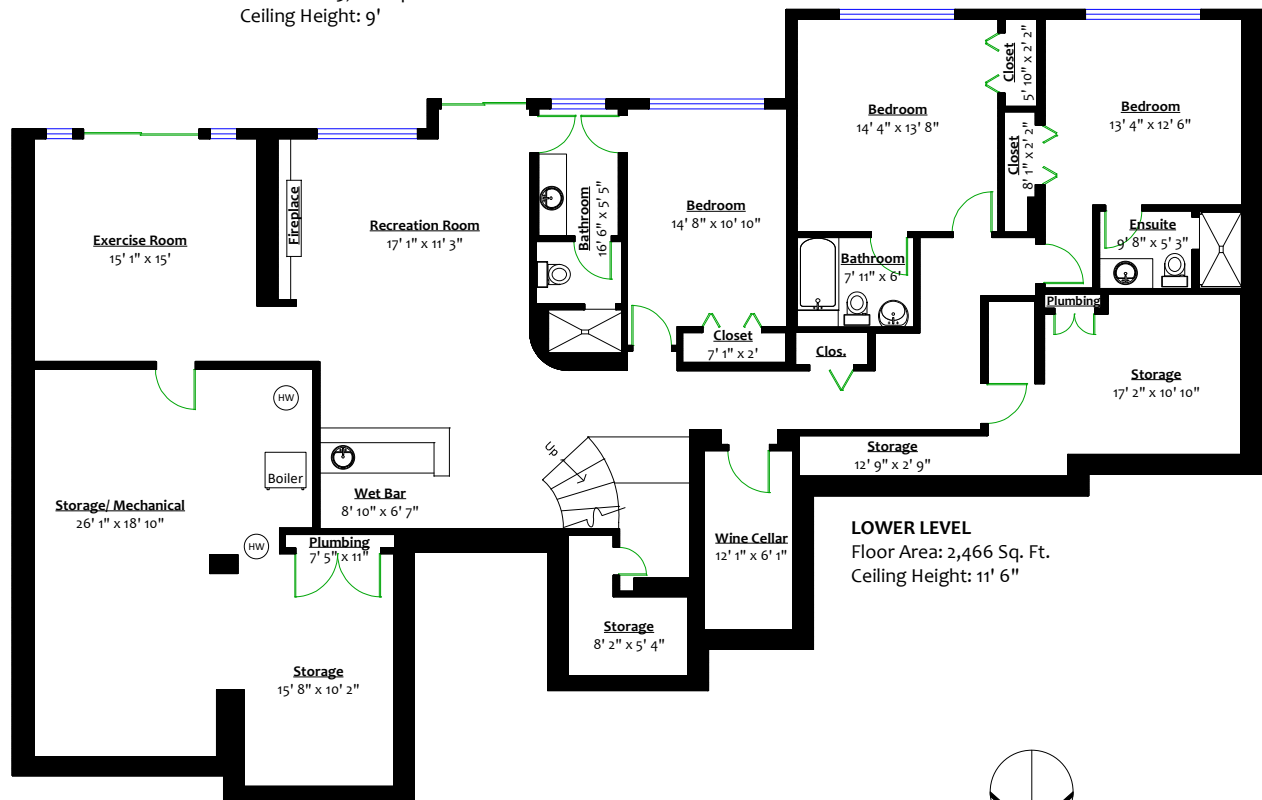
ROYAL LEPAGE **Sussex**

604.773.3599



**MAIN LEVEL**

Floor Area: 3,001 Sq. Ft.  
Ceiling Height: 9'



**LOWER LEVEL**

Floor Area: 2,466 Sq. Ft.  
Ceiling Height: 11' 6"

