

Lower Floor: 2,698 sq.ft.

Auxiliary Area

Balcony: 661 sq.ft.



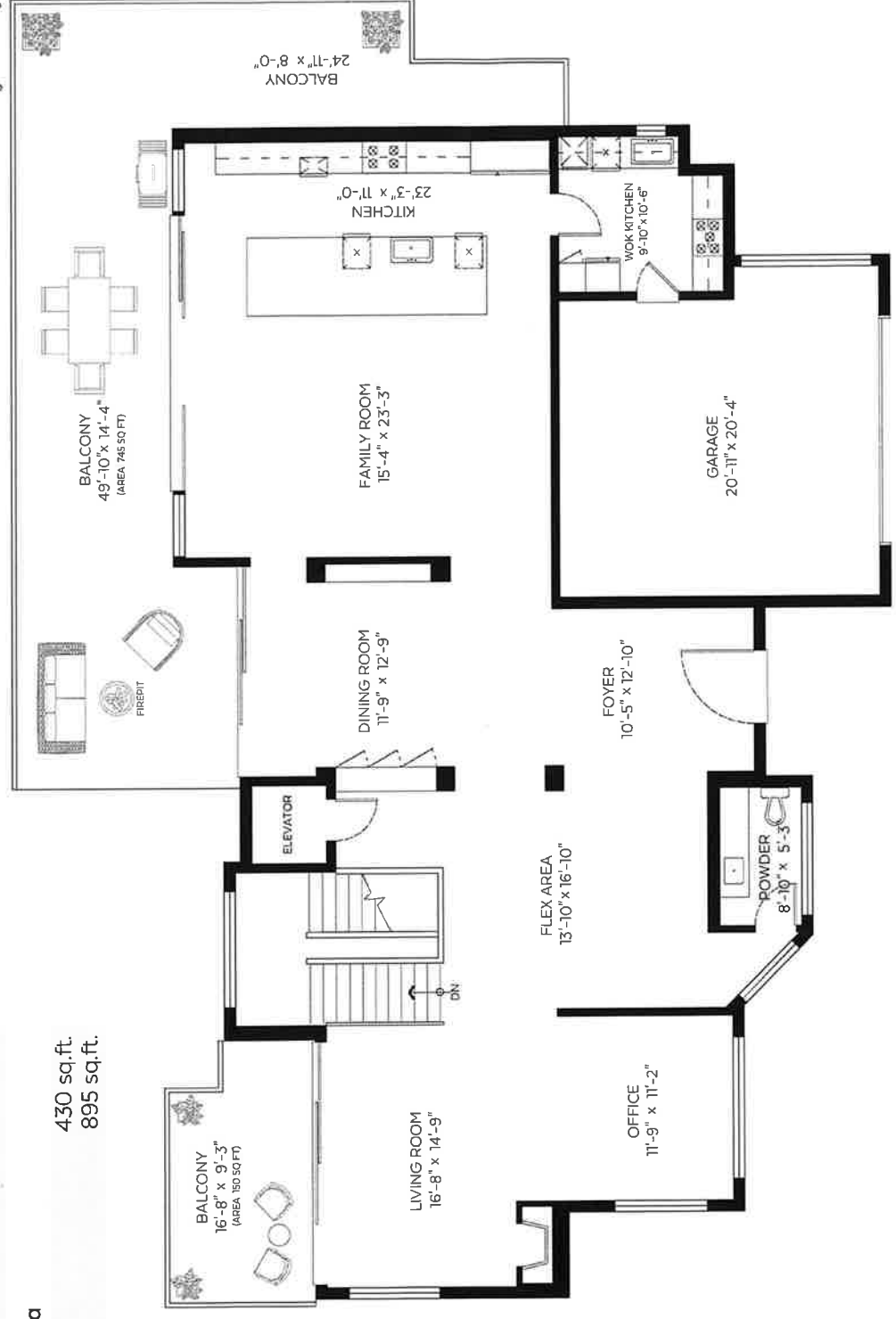


Main Floor: 2,205 sq.ft.

Auxiliary Area 430 sq.ft.

Garage: 895 sq.ft.

Balconies:



Sub-Lower Floor: 2,013 sq.ft.

Auxiliary Area

Deck/Pool: 1,945 sq.ft.

